



15 Corris Green Snowdon Drive, London, NW9 7RG

**Offers In Excess Of £200,000**

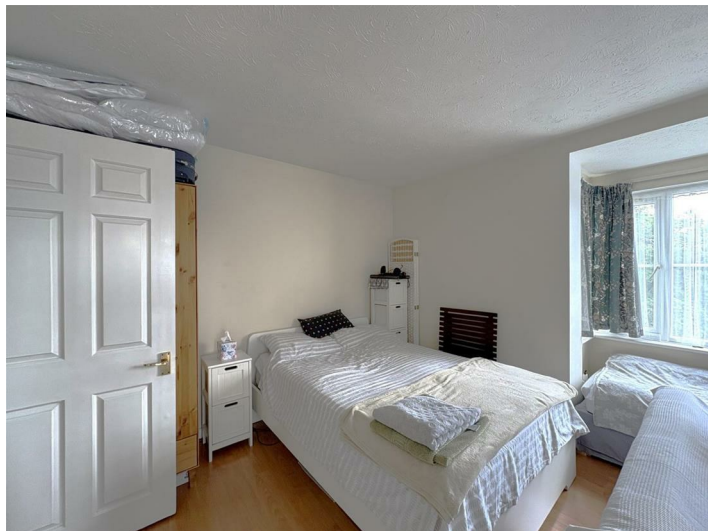
Benjamin Stevens are pleased to present this well kept studio in Corris Green just off Snowdon Drive. This studio would make an ideal first time buy or investment.

Accommodation comprises a spacious bedroom area with direct access to the open plan reception and kitchen. In addition to this, the studio also comes with off street allocated parking.

To arrange a viewing please call Benjamin Stevens.



**Bedroom Area**



**Bathroom**



**Full Aspect**



**Sitting Area**



**Kitchen**

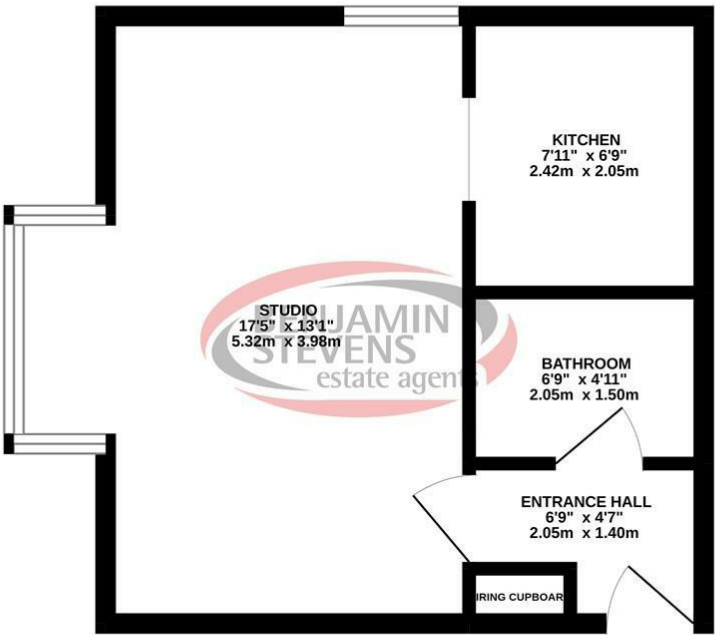


**Tenure**

Lease Length - 150 years  
Ground Rent - Peppercorn  
Service Charge - £1,500 p/a  
Council Tax - B  
EPC - C

Floor Plan

GROUND FLOOR  
316 sq.ft. (29.4 sq.m.) approx.

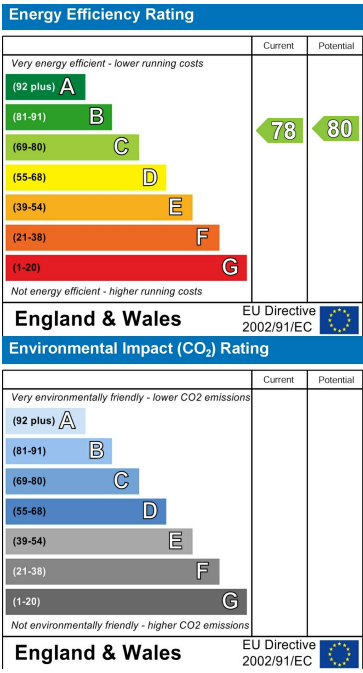


TOTAL FLOOR AREA : 316 sq.ft. (29.4 sq.m.) approx.  
Whilst every attempt has been made to ensure the accuracy of the floorplan contained herein, measurements of doors, windows, rooms and any other items are approximate and no responsibility is taken for any error, omission or mis-statement. This plan is for illustrative purposes only and should be used as such by any prospective purchaser. The services, systems and appliances shown have not been tested and no guarantee as to their operability or efficiency can be given.  
Made with Metropix ©2002.

Area Map



Energy Efficiency Graph



These particulars, whilst believed to be accurate are set out as a general outline only for guidance and do not constitute any part of an offer or contract. Intending purchasers should not rely on them as statements of representation of fact, but must satisfy themselves by inspection or otherwise as to their accuracy. No person in this firms employment has the authority to make or give any representation or warranty in respect of the property.



Edgware Office- 194 Station Road, Edgware, HA8 7AT. Tel: 020 8958 1118  
Bushey Heath Office- 59 High Road, Bushey, WD23 1EE. Tel: 020 8950 7777  
www.benjaminstevens.co.uk